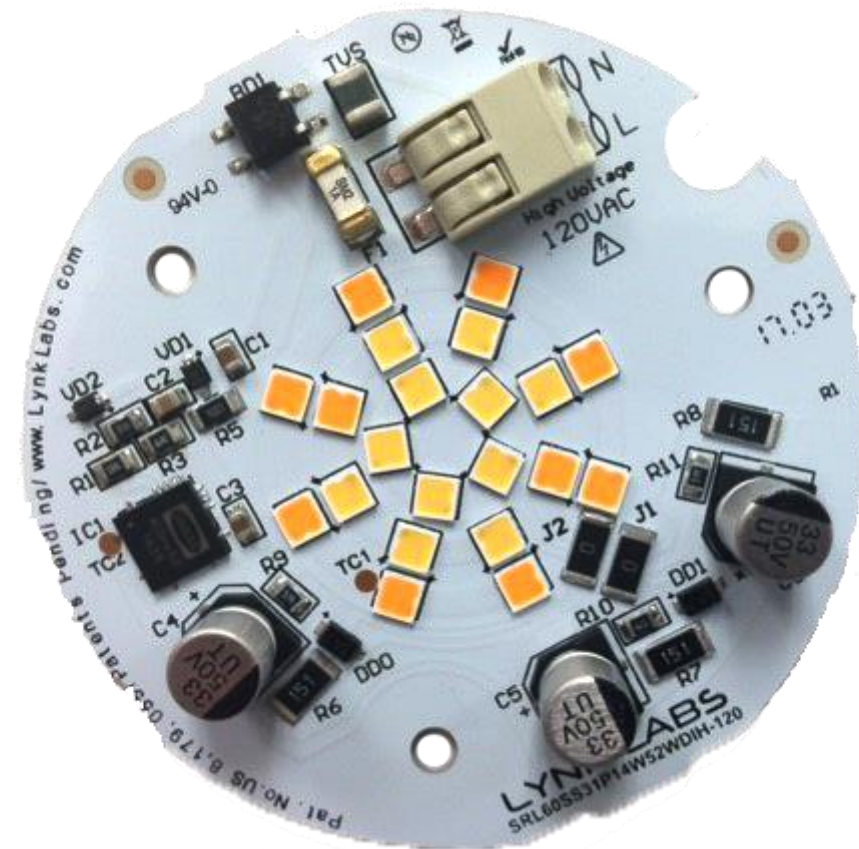




SnapBrite® SRL60-14W- 120

120Vac Direct Connect –AC LED MODULE
Warm-on-Dim or Single CCT
California Title 24 compliant
Flicker Free Triac Dimmable
60mm (2.36 in.) dia. 14 Watt 1095 lm

Technical Data Sheet





Direct Connect AC LED lighting technology

SnapBrite® SRL60-14W-120



Description

SnapBrite high voltage AC LED modules are fast, easy and reliable LED light sources for lighting OEMs in need of LED solutions that offer direct AC line voltage connectivity.

Lynk's patented AC LED technology eliminates the requirement for an expensive, bulky and failure prone AC – DC power supply or driver. Delivering efficiency, reliability and a high power factor, SnapBrite modules can be used by lighting manufacturers in many types of fixture as an effective replacement for energy hungry incandescent or CFL lamps. Additionally, the modules will dim with many popular leading and trailing edge phase cut dimmers.

Lynk Low THD Technology provides under 20% ATHD and a power factor of better than 0.97 for applications demanding minimal EMC disturbance.

Unlike other AC LED light sources, these SnapBrite modules offer a very unique but optional Warm-On-Dim feature that can change CCT from cooler to warmer as the dimming level changes. This mimics the way a traditional light bulb or halogen lamp becomes warmer to look at as the light level reduces. WOD is a great feature for hospitality and residential applications.

Meets California's Title 24 specification which requires that the flicker % at 200Hz remains below 30% at full power and at 20% dimming. This effectively eliminates perceptible flicker.

Look for the Lynk Labs name or this private label mark to ensure you are always backed by Lynk Labs high quality AC LED technology, IP, and reliability. Lynk Labs - Your AC LED Experts!



Features

- 120V Direct Connect - No Drivers/PSU's
- Lower Cost - Higher Reliability AC LED Module
- California Title 24 Compliant
- Triac Dimmable
- Warm-on-Dim capable
- Works with most existing AC Dimmers
- High Efficiency
- High Power Factor >0.97
- Low THD <20%
- Significant Energy Savings
- Long Operating Life
- Reliable, Fast & Easy

Applications

- Down Lighting
- Flush mounts,
- Ceiling Fans,
- Indoor/Outdoor General line voltage Illumination
- Ideal for commercial, hospitality and residential

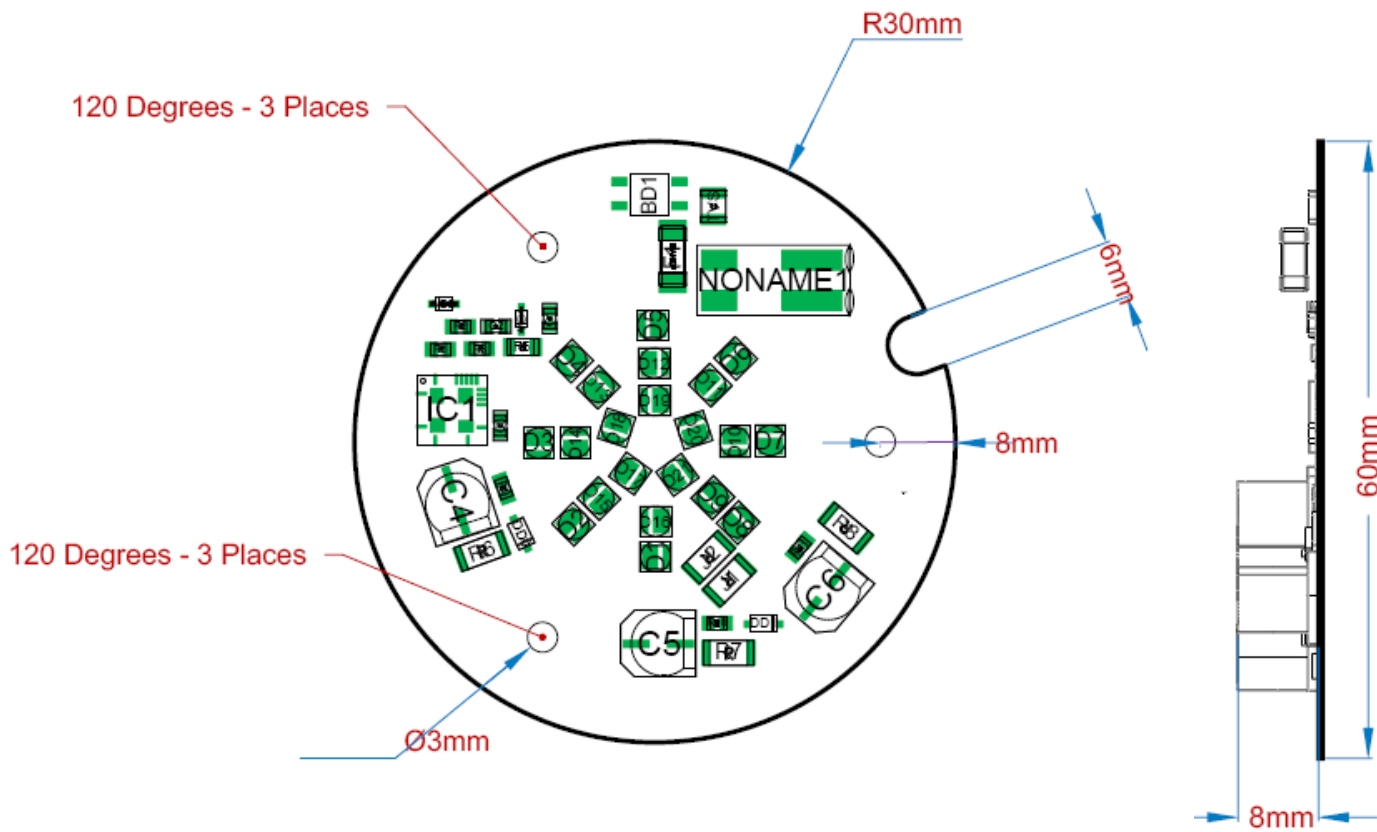


Contents:

1. Description, Features and Applications	2
2. Contents	3
3. Mechanical Dimensions	4
4. Electrical & Optical Characteristics	5
5. Absolute Maximum Ratings	5
6. C.I.E. Chromaticity Coordinates	6
7. Typical Electrical & Optical Characteristic Curves	7
8. Part Number Identification.....	8
9. Packaging	9
10. Reliability and Average Lumen Maintenance	9
11. Moisture Sensitivity.....	9



3. Mechanical Dimensions



Notes :

1. All dimensions are in millimeters.
2. Tolerance is $\pm 0.05\text{mm}$ unless otherwise noted.





4. Electrical & Optical Characteristics

ITEM	SYMBOL	CONDITION	UNIT	MIN.	Typ.	MAX.
Drive Voltage	V _f	connected to line	V _{rms}	100	120	132
Viewing Angle	2θ ^{1/2}		deg		120	
Case Temperature	T _c	I _f =120 mA	°C		70	90
Life at Nominal Case Temp		T _c =70	kHrs		50	
Typical Operating Power	W _T	I _f =120 mA	W		14	
Luminous Flux (3000K)	Φ		lm		1,093	
Power Factor		I _f =120mA			>.97	
Total Harmonic Distortion	ATHD		%		15	
Luminous Efficacy (3000K)	η _v		lm/w		77	
Flicker% at Full Power		200Hz Step Filter	%		<1%	
Flicker% at 20% Dimming		200Hz Step Filter	%		<3%	

*Measurement Uncertainty of the Luminous Flux: ± 10%

*Values given are for specified drive current at 25°C case temperature

Module Variants

MODEL NUMBER	CCT	CRI	VAC	POWER	LUMEN	lm/W
SRL60SS31A14W30K1H-120	3000K	90	120	14.2	1095	77
SRL60SS31A14W52WD1H-120	1800-3700K	90	120	14.4	1060	74

Other CCTs may be Available to Special Order

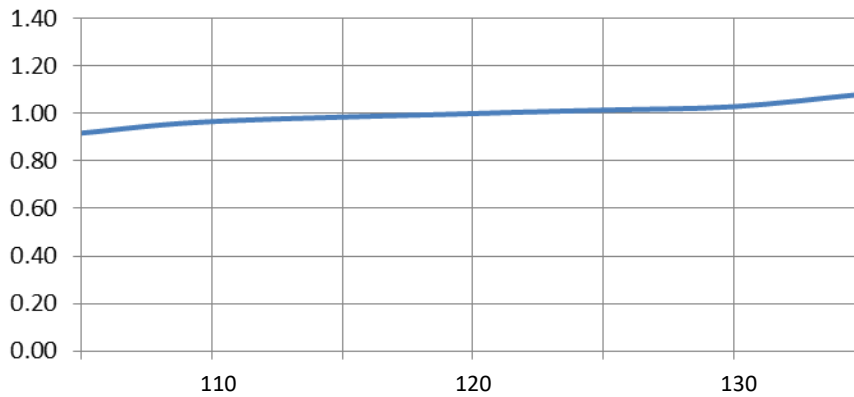
5. Absolute Maximum Ratings (@ Ta=25°C)

ITEM	SYMBOL	ABSOLUTE MAXIMUM RATING	UNIT
Power Dissipation	P _d	17	W
A.C. Current	I _f	140	mA _{rms}
AC Voltage	V _f	132	V
Operating Temperature	T _o	-25 ~ +70	°C
Storage Temperature	T _s	-40 ~ +100	°C
Soldering Temp (Hand)	T _{sld}	370	°C



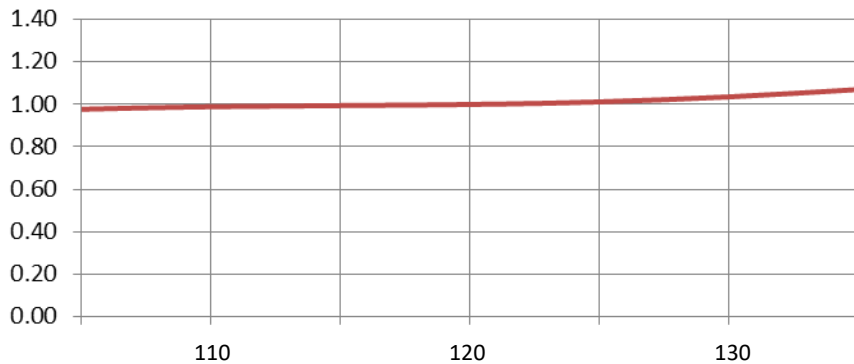
7. Typical Electrical & Optical Characteristic Curves

Relative Power vs Voltage

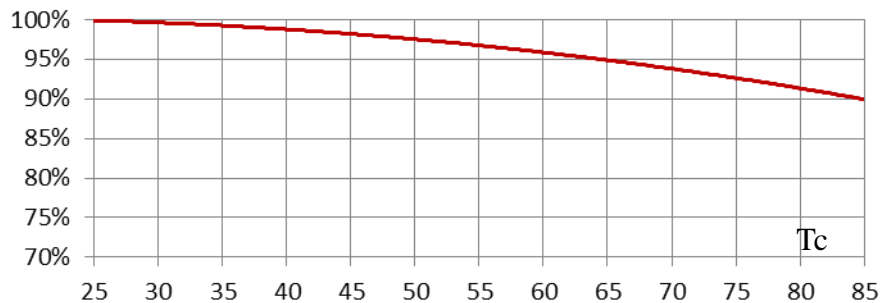


Ta=25°C

Relative Luminous Flux vs. Voltage



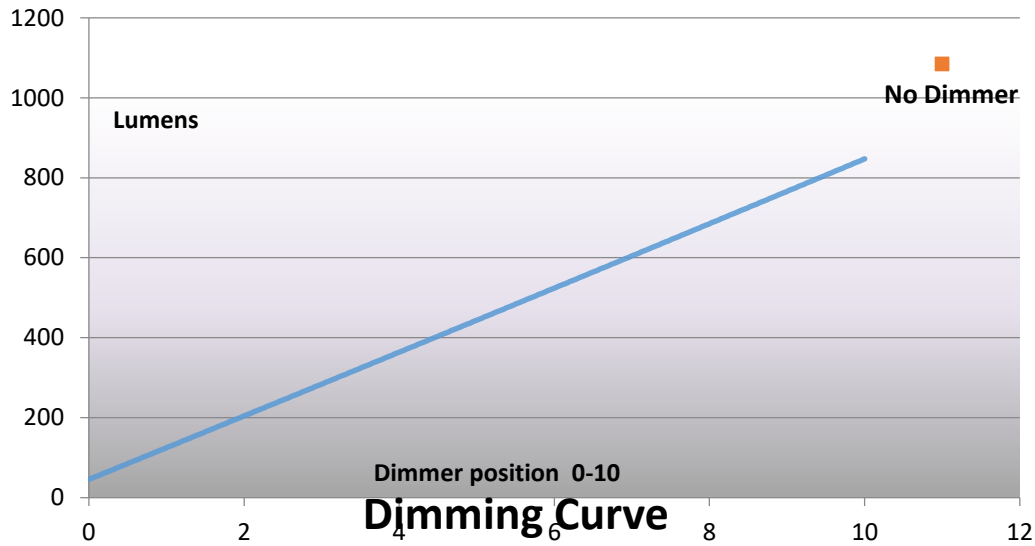
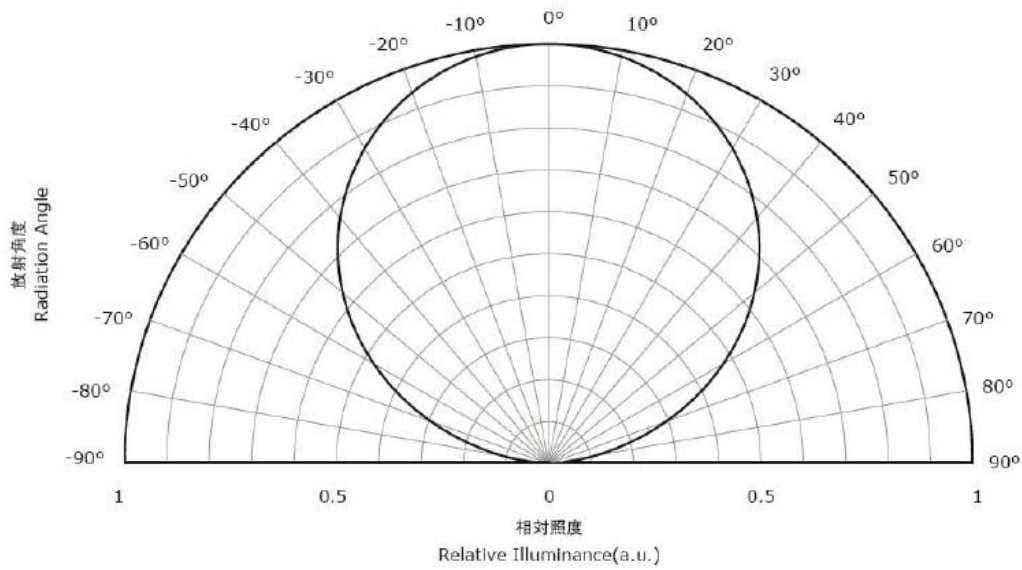
Lumen Thermal de-rating curve





Directivity

$T_A = 25^\circ\text{C}$





8.Part Number Identification

Part Number																				
Product Code	Shape	Dimension/Diameter (mm)			Internal Codes			Module Power	aTHD	CCT (XXK) Warm on Dim (XYWD)		Connection Type	CRI	Input Voltage	Miscellaneous					
S	R	L	6	0	S	S	3	1	A	1	4	W	L	3	0	K	I	H	120	

Model Number															
Product Code	Shape	Dimension/Diameter			Module Power	aTHD	CCT (XXK) Warm on Dim (XYWD)		Connection Type	CRI	Input Voltage	Miscellaneous			
S	R	L	6	0	1	4	W	L	3	0	K	I	H	120	

Product Code	
S	= SnapBrite™
T	= Tesla™
G	= GeoLite™
B	= BriteDriver®

Shape	
R	= Round
S	= Square
T	= Star
L	= Linear

Dimension/Diameter	
L	= X X X
W	= Y Y Y
D	= Z Z Z

Module Power	
Q	= 0.25W
H	= 0.5W
T	= 0.75W
R	= Decimal Point

aTHD	
L	= < 20%
H	= ≥ 20%

CCT/WOD				
2	2	K		= 2200K
2	7	K		= 2700K
3	0	K		= 3000K
3	5	K		= 3500K
4	0	K		= 4000K
5	0	K		= 5000K
5	7	K		= 5700K
3	2	W	D	= ~ 2700K To 2200K Warm on Dim
4	2	W	D	= ~ 3000K To 2200K Warm on Dim
5	2	W	D	= ~ 3500K To 2200K Warm on Dim

Connection Type	
C	= Poke-In Connector
I	= Insulation Displacement Connector
O	= Connector + Solder Pads
W	= Wire "Pigtail"
X	= Solder Pads

CRI	
L	= < 80 CRI
S	= ≥ 80 CRI
H	= ≥ 90 CRI

Input Voltage	
12V	= 12 VAC, Magnetic or Electronic Transformer Source
12E	= 12 VAC, Electronic Transformer Source Only
120V	= 120 VAC
120R	= Rectified 120 VAC
230V	= 230 VAC



9. Packaging

LED Modules will be packaged in trays for primary protection.

According to the total delivery amount, cardboard boxes will be used to protect the Trays of LED Modules from mechanical shocks during transportation.

The boxes are not water resistant and therefore must be kept away from water and moisture.

10. Reliability and Average Lumen Maintenance

Before releasing new products the manufacturer puts a representative product sample set through an entire suite of qualification tests, including the most stressful test for high power LEDs, the Wet High-Temperature Operating Life (WHTOL) test at 85°C/85%RH for 1000 hours at the specified operating current.

LED lifetime has been extrapolated based on the accumulated operating and accelerated aging data. Based on this data, the manufacturer projects that the LED products will deliver, on average, 70% lumen maintenance at 50,000 hours of operation at the specified operating current, provided that the case temperature is maintained at or below 80°C.

11. Moisture Sensitivity

The module can operate for up to 1000hrs at 85 °C and 65% Relative Humidity.

It is not designed for operation in wet conditions without an additional conformal coating which must be approved and supplied by the manufacturer during the module build process or warranty will be voided