



# SnapBrite® SRL65-13W-CM-22K/33K-120

120VAC Direct Connect – AC LED Module

IEEE/CEC-T24 Flicker Compliance

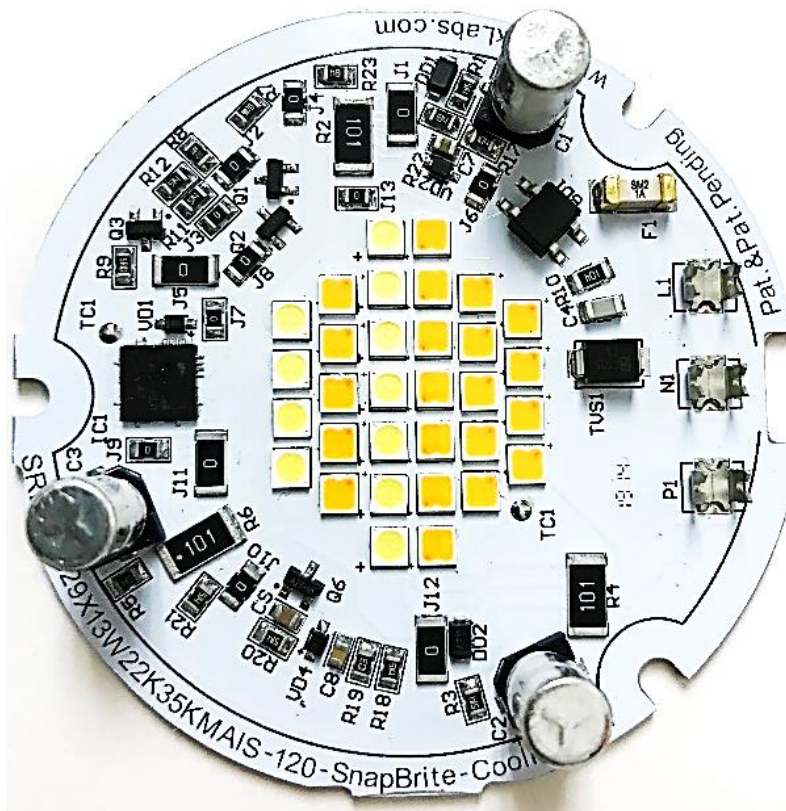
**Patented Cool-Motion® Design**

Normal On-State; 2200K ~590 Lumens @5.3W

On Detection of Motion; 3300K ~1375 Lumens @ 12.4W

65mm (3.15 inch) Diameter Round X 11.4mm (0.45 inch) Height

## Technical Data Sheet





## Direct Connect AC LED lighting Technology

### SnapBrite® SRL65-13W-CM-22K/33K-120

#### Description

The SRL65-13W-CM-120 module utilizes Lynk Labs patented “Cool-Motion®” technology to increase the power/lumens output and switch to a cooler CCT when motion is detected.

The SRL65-13W-CM-120 module utilizes Lynk Labs patented “Driver on Board” technology to provide a compact, self-contained, highly reliable, easy to install module that can connect directly to 120VAC mains.

This module has been designed to meet the following standards; UL8750, CSA-C22.2 No 250, UL 94V0, RoHS, IEEE-1789, CEC-Title-24 (JA8).

This module is compatible with most ELV type Triac dimmers hooked in series with the power input.

This module is designed for long life based on the thermal performance of the fixture in which it is implemented. We recommend that the fixture be designed for a temperature  $\leq 85^{\circ}\text{C}$  @ the thermal Test Points located on the module.

This module employs several Lynk Labs patents to cover the product from circuit to system. More information on Lynk Labs Intellectual Property is available at [www.lynkylabs.com](http://www.lynkylabs.com).

#### Features

- ✓ **590 lumens @ 2200K Normal On-Sate, 1375 lumens @ 3300K on detection of motion. (Motion Activated from Access Lighting to Task/Security Lighting)**
- ✓ **12.4W, 1375 Lumens**
- ✓ **Direct Mains; 90 to 132 VAC**
- ✓ **Low Flicker – Meets CEC T24 & IEEE-1798**
- ✓ **Driver on Board – Cost/Reliability**
- ✓ **Simple Installation**
- ✓ **Low THD**
- ✓ **Motion Sensor Interface; DF #5716A or Equivalent Phase-Cut Dimming**
- ✓ **ETL Recognition to UL8750 & CAS; C22.2 #250 Pending.**
- ✓ **Patent Protected Circuit-to-System**

#### Applications

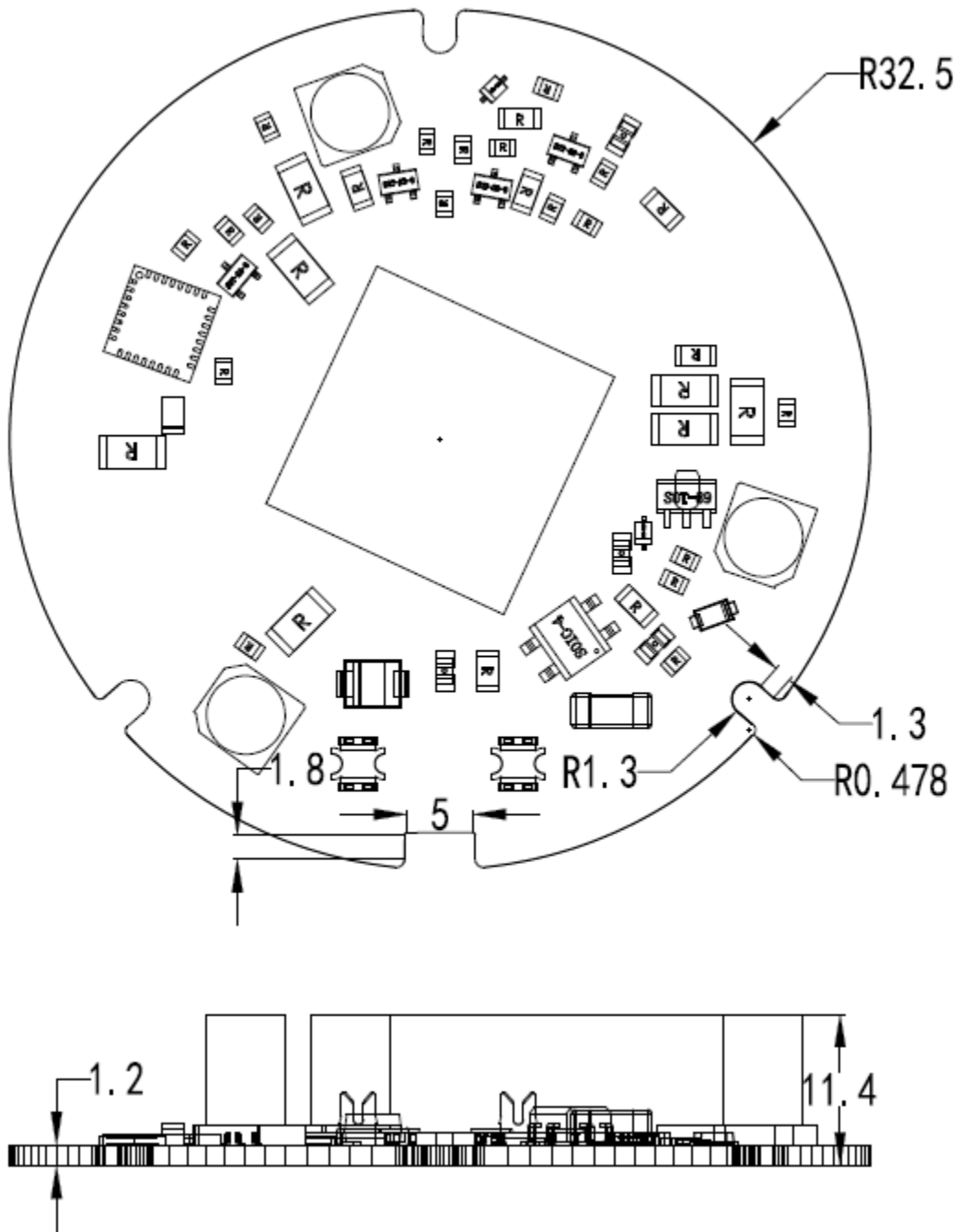
- **Lamps/Wall/Sconce/Pathway/Posts/Bollards/Coach/Lantern**
- **Accent Lights**
- **Task Lights**
- **Security Lighting**



## **Contents**

Title.....	1
Description, Features and Applications.....	2
Contents.....	3
Mechanical Dimensions .....	4
Electrical & Optical Characteristics.....	5
Typical Electrical & Optical Characteristic Curves.....	6
Part Number Identification.....	7
Installation.....	8
ETL Recognition.....	8
Flicker Performance.....	8
High Voltage Warning.....	8

## Mechanical Dimensions



### Notes:

1. All dimensions are in millimeters.
2. Tolerance is  $\pm 0.05\text{mm}$  unless otherwise noted.



## Electrical & Optical Characteristics

Item	Symbol	Condition	Unit	Min.	Typ.	Max.
Drive Voltage	V <sub>f</sub>	Connected to Line	V <sub>rms</sub>	100	120	132
Viewing Angle	2θ <sub>½</sub>		Deg		120	
Case Temperature	T <sub>c</sub>	I <sub>f</sub> = 120 mA	°C		70	90
Life at Nominal Case Temp		T <sub>c</sub> ≤ 70°C	kHrs		50	
Typical Operating Power	W <sub>T</sub>	I <sub>f</sub> = 45 mA	W		5.4	
		I <sub>f</sub> = 110 mA	W		12.5	
Luminous Flux (3300K)	Φ		Lm		1,375	
Total Harmonic Distortion	ATHD		%		≤20	
Luminous Efficacy (3300K)	η <sub>v</sub>		lm/W		110	
Flicker% Dimmer @ Max		200Hz Step Filter	%		<30%	
Flicker% Dimmer @ 20%		200Hz Step Filter	%		<30%	
Flicker% Dimmer @ Min		200Hz Step Filter	%		<30%	

\*Measurement Uncertainty of the Luminous Flux: ± 10%

\*Values given are for specified drive current at 25°C case temperature

Part Number Variants	CCT	CRI	VAC	Power	Lumen	Lm/W
SRL65SS31X13W22K35KMAIS-120	2200K	>80	120	5.4	590	109
	3300K	>80	120	12.5	1375	110

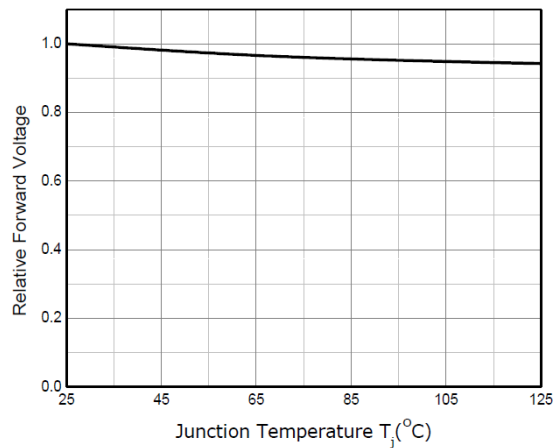
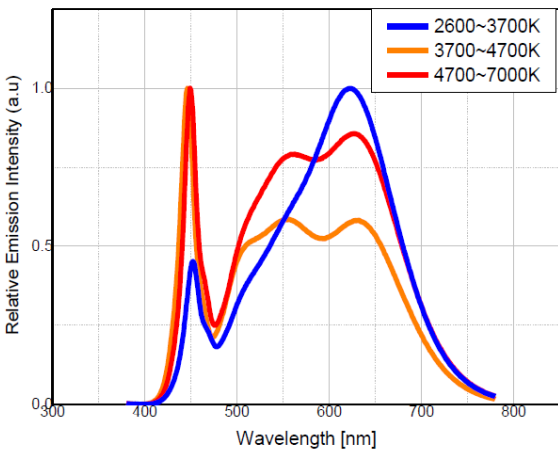
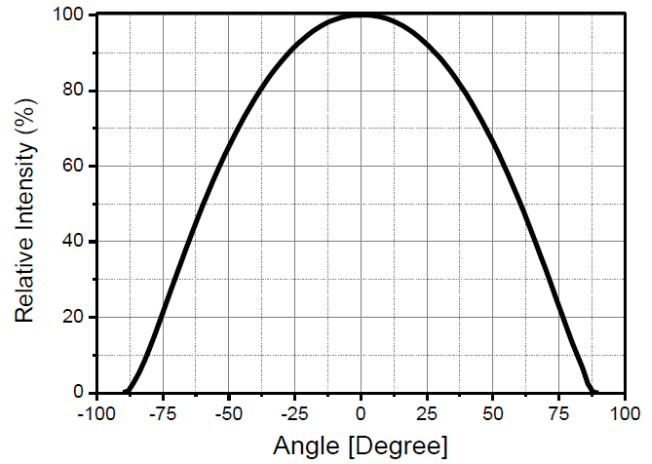
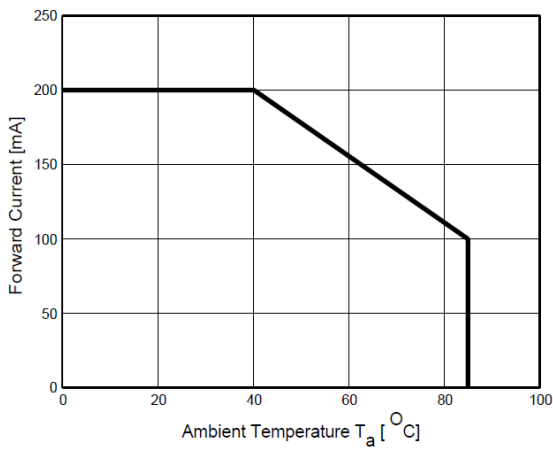
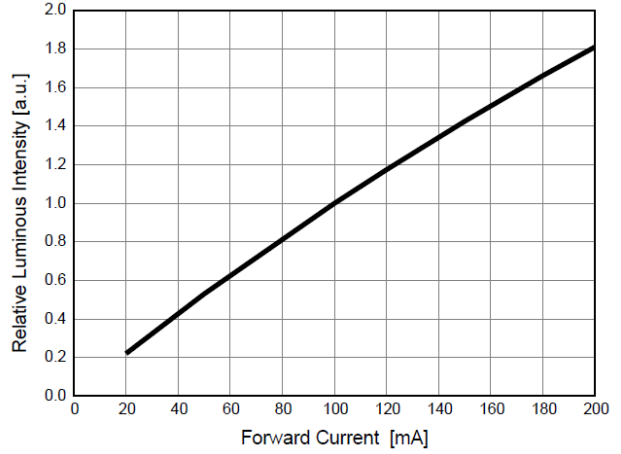
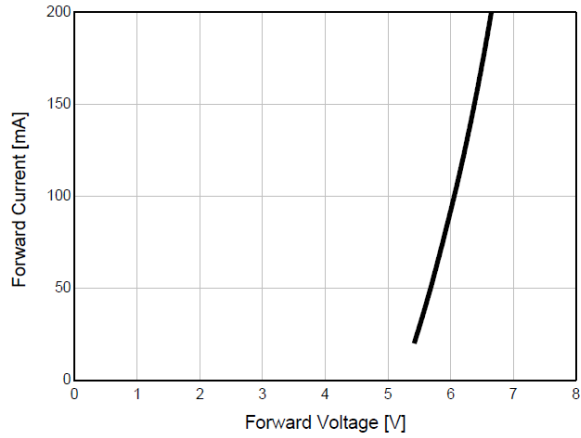
\*Other CCTs may be Available to Special Order

## Absolute Maximum Ratings (@ Ta=25°C)

Item	Symbol	Absolute Maximum Rating	Unit
Power Dissipation	P <sub>d</sub>	15.0	W
AC Current	I <sub>f</sub>	140	mA <sub>rms</sub>
AC Voltage	V <sub>f</sub>	132	V
Operating Temperature	T <sub>o</sub>	-25 to +70	°C
Storage Temperature	T <sub>s</sub>	-40 to +100	°C
Soldering Temp (Hand)	T <sub>sld</sub>	370	°C



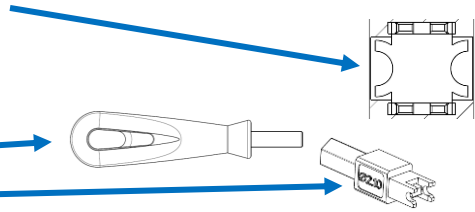
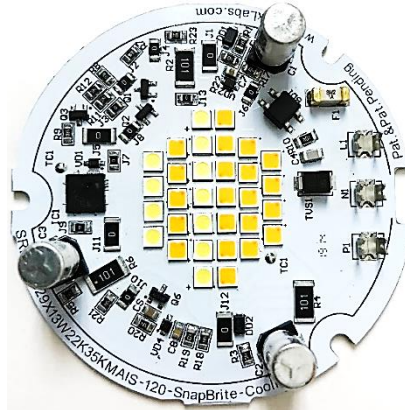
## Typical Electrical & Optical Characteristic Curves







- The Connector used is a AVX, IDC, Part Number; 709176001501006.
  - Will work with 18 AWG Fine-Stranded or Solid Wire.
  - Insulation Diameter 1.6mm to 2.1mm.
  - Use AVX Punch Down Tool, 067000763001000 with 069176701901000 Metal tool
- Attach Motion Sensor to the P1 connector and mount the sensor to the fixture based on the application and usage plan.



**ETL Recognized UL9750 & CSA-C22.2; Report # *In Process***



**Flicker Performance (Pass = <30% @ ≥200 Hz):**

Dimmer set to Maximum (100%)	0-40 Hz	0-90 Hz	0-200 Hz	Pass/Fail
Percent Flicker				
Amplitude Modulation				
Dimmer set to 20%	0-40 Hz	0-90 Hz	0-200 Hz	Pass/Fail
Percent Flicker				
Amplitude Modulation				
Dimmer set to Minimum	0-40 Hz	0-90 Hz	0-200 Hz	Pass/Fail
Percent Flicker				
Amplitude Modulation				

**Caution; High-Voltage is Present on the Top Surface of the Module!**

**Customer Service; 847-783-0123**