

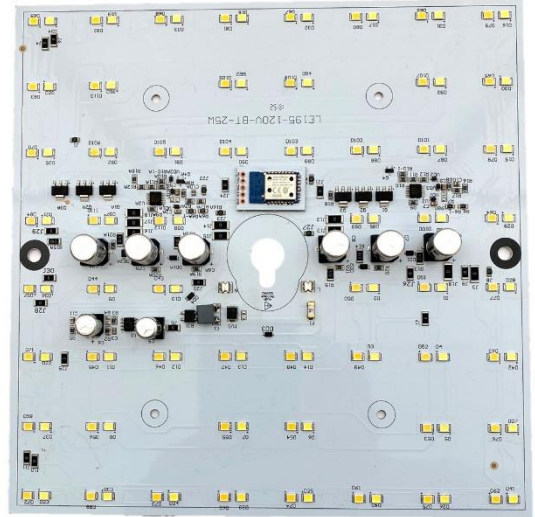


SnapBrite® High Voltage AC-LED Modules

SSL195... Smart DoB Family

Smart DoB-Bluetooth/IoT

- ✓ **2700K - 5000K, Selectable-CCT**
 - Reduces Inventory
 - Reduces Customer Returns
- ✓ **25W, 2060 to 2500 Lumens**
- ✓ **Direct Mains; 90 to 132 VAC**
- ✓ **Low Flicker – Meets CEC T24 & IEEE-1798**
- ✓ **Driver on Board – Cost/Reliability**
- ✓ **Simple Installation**
- ✓ **Low THD**
- ✓ **Bluetooth Controlled – “Mesh Lamp App”**
 - CCT Select Control
 - Dimming Control
 - Connect to Smartphones, Tablets, Other Wireless Enabled Devices
- ✓ ***Patent Protected Circuit-to-System***
- ✓ **Great for;**
 - Downlights
 - Flush Mounts
 - Low Bay
 - Area Lights



25W; ~2,500 Lumens @ 3000K
In-Process:
ETL Recognition; UL 8750, CSA; C22.2

- ❖ ***Samples Available Now***
- ❖ ***Can Ship in USA or China***
- ❖ ***Pricing Available on Request***

Available CCTs	2700K	CRI	≥ 80
	3000K	THD	≤ 27
	4000K	System Efficacy @ 3000K	≥ 100 lm/W
	5000K	Life @ TC = 70°C	50K/Hrs.